

Concrete cutting, diamond drilling, slab removal

High Wycombe Town Centre Car Park Refurbishment - Just the Ticket for TCC

- Concrete Cutting
- Diamond Drilling
- Slab Lifting and Removal

Project Duration: 2 days per opening



72HP diesel floorsaw cuts reinforced concrete floorslab to form openings for car park ramps

Project Overview

When High Wycombe town centre was being redeveloped, TCC was contracted to undertake an important element in the overall scheme.



Diamond blade on floorsaw cuts opening whilst operator wears full safety harness restraint system

The company was asked to find a speedy solution to cutting three new openings for ramps in the multi-story car park serving retail outlets and offices involved in the major redevelopment programme.

Project Methodology

After undertaking a full risk assess-

ment and sharing a methodology plan with the customer, TCC opted for a combination of concrete diamond cutting and drilling to create 1m x 5m long sections that could be lifted free.

Critical to the success of the operation was ensuring the rigorous application of Health & Safety procedures to safeguard the well-being of TCC operatives within a carefully controlled working area.



Section of reinforced concrete floorslab is lifted out after diamond saw cutting

TCC replicated the working process for each of the 16m x 5m openings in the 200mm thick cast reinforced concrete slabs. First holes were diamond drilled along the lengths of the slabs to fix straps that would hold the concrete sections as they were being cut. Once cut, each section was lifted clear until each opening was complete.



Section of saw cut reinforced concrete floorslab is lifted away by crane for disposal

Key Performance Criteria

This was a project with Health & Safety at its heart. In line with the TCC methodology statement and Risk Assessment, the work area was segregated with barriers both on and below the level being cut.

All operatives and machinery were secured using harnesses and restraints to ensure optimum site safety.



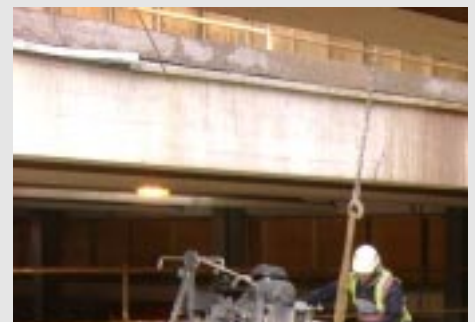
Saw cutting progresses on 3rd level opening viewed through clean cut edges of the two levels above (previously saw cut out)

Outcomes

The work was completed on time and the finish provided by the diamond saw meant that the openings were ready to receive the new steel frames and ramps without any need to make good.

TCC was subsequently awarded additional work by the client.

Call 01243 572784



Two floorsaws cut free held section of reinforced concrete floorslab to create large opening